

## ATEX ENCLOSURES : EJB X WITH TERMINALS

### ELECTRICAL SPECIFICATIONS :

Rated voltage : 24 / 800 V  
 Rated frequency : 50 / 60 Hz

#### **Modular terminals**

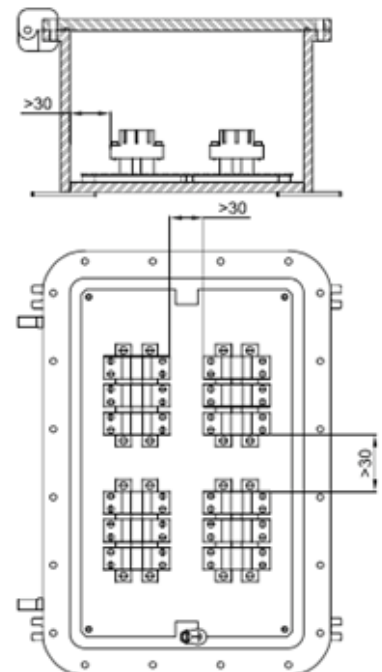
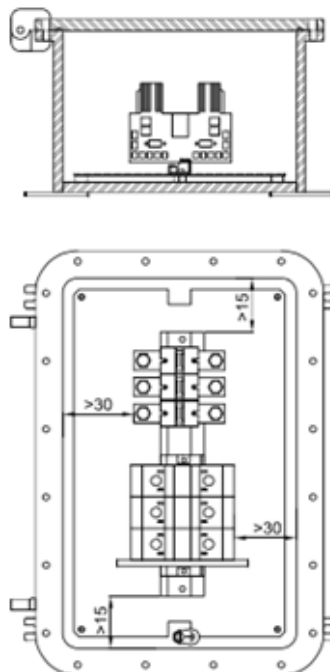
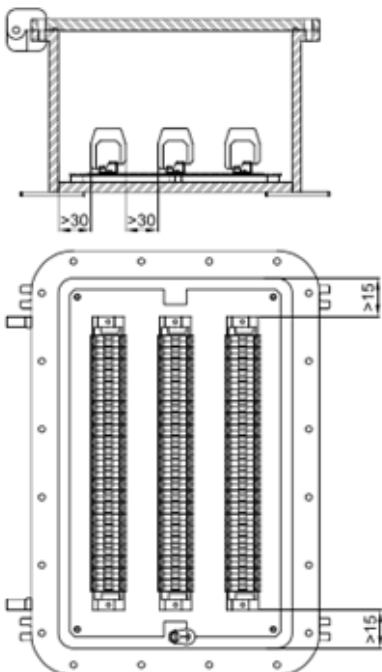
Cross section of the terminal : 2.5, 4, 6, 10, 25, 35, 70, 95, 120 ,  
 185, 240, 300 [mm<sup>2</sup>]  
 Rated current : 12.5 - 452 [A]  
 Max current density : 1.5 - 7 [A/mm<sup>2</sup>]

#### **Multipole terminals**

Terminal cross section : 3x16; 4x16; 3x25; 4x25; 3x40; 3x40;  
 4x40; 3x70; 4x125; 3x200; 4x200; 3x315 [mm<sup>2</sup>]  
 Rated current : 48 - 252 [A]  
 Max current density : 0.8 - 3 [A/mm<sup>2</sup>]

#### **Busbars**

Dimensions of the busbars :20x5; 30x5; 40x5; 50x5; 60x5; 80x5;  
 100x4; 80x8; 100x5 [mm<sup>2</sup>]  
 Rated current :240 350 480 600 690 800 800 1000 1000 [A]





## MECHANICAL CHARACTERISTICS :

**Body and lid** : Low copper aluminium alloy

**Hinges** : Cast iron (except EJB-01), stainless steel for new models

**Cover handle** : Black painted steel for EJB-6, 6B and EJB-7, 7B

**Seal** : Acid, hydrocarbon and high temperature resistant silicone, located between the body and the lid

**Certification label** : Adhesive label located inside an empty enclosure; aluminium label riveted on the lid other versions

**Bolts and screws** : Stainless steel

**Ground screw** : Stainless steel M6. Inside and outside the body and on the lid with anti-rotation brackets

**Mounting brackets** : Electro-galvanized steel (cast aluminum legs for AQS-1)

**Coating** : RAL 7035 polyester coating (light gray)

**Corrosion resistance** : The STANDARD of the aluminum alloy used by Cortem has successfully passed the tests required by EN 60068-2-30 (hot / humid cycles) and EN 60068-2-11 (salt spray tests)

TYPE OF ENCLOSURE	MAXIMUM NUMBER OF TERMINALS HOUSED									
	TERMINAL CROSS-SECTIONAL AREA									
	2.5	4	6	10	16	35	70	120	185	240
EJBX-01	22	17	14	12	-	-	-	-	-	-
EJBX-1	2x28	26	21	15	12	10	3	-	-	-
EJBX-2	2x38	2x28	2x22	2x15	2x12	18	4	-	-	-
EJBX-3	3x38	3x35	3x28	3x23	2x21	14	6	4	3	3
EJBX-3B	3x38	3x35	3x28	3x23	2x21	14	6	4	3	3
EJBX-4	3x48	3x38	3x30	3x29	3x25	2x18	13	6	6	5
EJBX-4B	3x48	3x38	3x30	3x29	3x25	2x18	13	6	6	5
EJBX-45	3x70	3x65	3x50	3x35	3x25	2x20	20	10	8	8
EJBX-45B	3x70	3x65	3x50	3x35	3x25	2x20	20	10	8	8
EJBX-5	3x80	3x70	3x60	3x50	3x40	2x28	22	10	10	8
EJBX-5B	3x80	3x70	3x60	3x50	3x40	2x28	22	10	10	8
EJBX-6	4x120	4x100	4x80	4x60	4x50	3x35	30	15	15	15
EJBX-6B	4x120	4x100	4x80	4x60	4x50	3x35	30	15	15	15
EJBX-7	5x130	5x110	5x95	5x75	5x60	5x45	4x35	3x20	2x18	15



## CERTIFICATION DATA FOR BOXES WITH TERMINALS :

<b>Classification:</b>	Group II	Category 2GD		
<b>Installation:</b> EN 60079.14	zone 1 - zone 2 (Gas)	zone 21 - zone 22 (Dust)		
<b>Marking:</b>	CE 0722 Ex II 2 GD - Ex d IIB+H <sub>2</sub> T... Gb - Ex tb IIIC T...°C Db - IP66/67			
	CE 0722 Ex I M2 - Ex d I Mb			
<b>Certification:</b>	ATEX CESI 01 ATEX 026			
	TR CU AVAILABLE	All TR CU certification data can be downloaded from <a href="http://www.cortemgroup.com">www.cortemgroup.com</a>		
<b>Standards:</b>	CENELEC EN 60079-0: 2009, EN 60079-1: 2007, EN 60079-31: 2009, EN 60439-1, EN 60529: 1991 and EUROPEAN DIRECTIVE 2014/34/UE			
<b>Ambient Temp.:</b>	-50°C +40°C		With temperature class T6 and maximum surface temperature T85°C.	
	-50°C +55°C		With temperature class T5 and maximum surface temperature T100°C.	
<b>Degree of protection:</b>	IP66/67			

## APPLICATION SECTORS :

