

## ATEX ENCLOSURES : SERIES S, SF, SSC

### TECHNICAL CHARACTERISTICS :

**Body and lid :** Aluminium alloy with low copper content.  
Screw cap with safety screw.

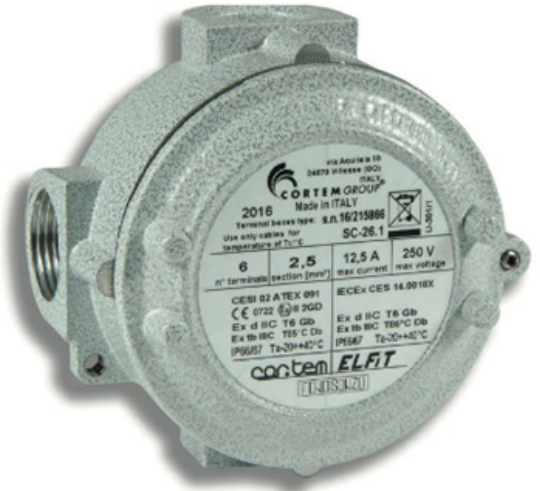
**Seal :** Acid and hydrocarbon resistant silicone, located between the body and the lid.

**Inputs :** Thread GAS UNI ISO 7/1

**Certification label :** Adhesive label on the lid for 6 and 9 boxes; on the body for size 4

**Bolts and screws :** Stainless steel

**Earth screw :** Stainless steel. Inside and outside the complete body



### ELECTRICAL SPECIFICATIONS :

**Rated voltage :** 750 V

**Rated frequency :** 50/60 Hz

#### **TERMINALS**

**Cross-section of the terminal :** 1,5; 2,5; 4; 6; dix; 16; 25; 35; 70 [mm<sup>2</sup>]

**Rated current :** 8 - 175 [A]

**Max. current density :** 2,5 - 6,6 [A / mm<sup>2</sup>]

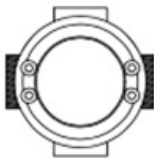
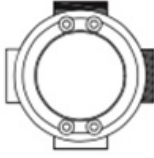




### TECHNICAL CHARACTERISTICS :

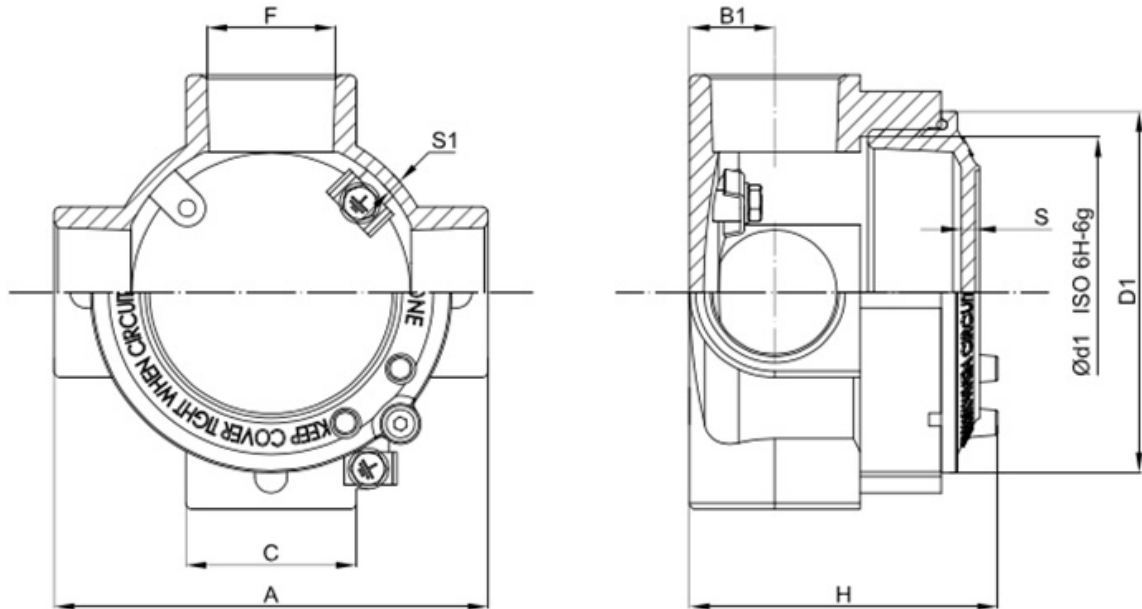
#### **Accessories on request :**

- Stainless steel material 316 L (ASI)
- Electro-polished 316L stainless steel finish
- Choice of number entry exits
- Choice of diameter of the inputs and outputs
- Choice of the threads of the sottes, NPT, GAS, METRIC

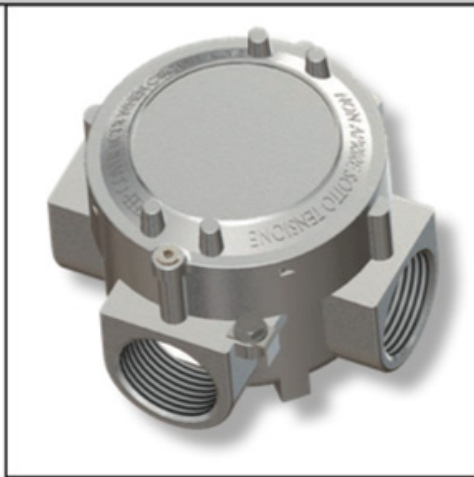
## SELECTION TABLE OF SERIES S CASES :

| Code    | Position of entries   | GAS UNI ISO 7/1 | Model | Outside dimensions mm |     |     |    |    | Inside dimensions mm |     |     | Weight kg |
|---------|---|-----------------|-------|-----------------------|-----|-----|----|----|----------------------|-----|-----|-----------|
|         |   |                 |       | A                     | D1  | H   | C  | B1 | Ød1                  | S   | S1  |           |
| SC-14.1 |    | 2 x 1/2"        | A     | 72                    | 65  | 61  | 34 | 17 | 54x2                 | 3,5 | 3,5 |           |
| SC-24.1 |   | 2 x 3/4"        | A     | 72                    | 65  | 61  | 34 | 17 | 54x2                 | 3,5 | 3,5 |           |
| SC-16.1 |   | 2 x 1/2"        | A     | 100                   | 89  | 67  | 34 | 17 | 80x2                 | 3,5 | 3,5 |           |
| SC-26.1 |   | 2 x 3/4"        | A     | 100                   | 89  | 67  | 34 | 17 | 80x2                 | 3,5 | 3,5 |           |
| SC-36.1 |   | 2 x 1"          | A     | 107                   | 89  | 75  | 42 | 21 | 80x2                 | 3,5 | 3,5 |           |
| SC-29.1 |   | 2 x 3/4"        | B     | 190                   | 146 | 105 | 60 | 30 | 130x2                | 4   | 7   |           |
| SC-39.1 |   | 2 x 1"          | B     | 190                   | 146 | 105 | 60 | 30 | 130x2                | 4   | 7   |           |
| SC-59.1 |   | 2 x 1 1/2"      | B     | 190                   | 146 | 105 | 60 | 30 | 130x2                | 4   | 7   |           |
| SC-69.1 |   | 2 x 2"          | B     | 190                   | 146 | 110 | 70 | 35 | 130x2                | 4   | 7   |           |
| SL-14.1 |  | 2 x 1/2"        | A     | 72                    | 65  | 61  | 34 | 17 | 54x2                 | 3,5 | 3,5 |           |
| SL-24.1 |   | 2 x 3/4"        | A     | 72                    | 65  | 61  | 34 | 17 | 54x2                 | 3,5 | 3,5 |           |
| SL-16.1 |   | 2 x 1/2"        | A     | 100                   | 89  | 67  | 34 | 17 | 80x2                 | 3,5 | 3,5 |           |
| SL-26.1 |   | 2 x 3/4"        | A     | 100                   | 89  | 67  | 34 | 17 | 80x2                 | 3,5 | 3,5 |           |
| SL-36.1 |   | 2 x 1"          | A     | 107                   | 89  | 75  | 42 | 21 | 80x2                 | 3,5 | 3,5 |           |
| SL-29.1 |   | 2 x 3/4"        | B     | 166                   | 146 | 105 | 60 | 30 | 130x2                | 4   | 7   |           |
| SL-39.1 |   | 2 x 1"          | B     | 166                   | 146 | 105 | 60 | 30 | 130x2                | 4   | 7   |           |
| SL-59.1 |   | 2 x 1 1/2"      | B     | 166                   | 146 | 105 | 60 | 30 | 130x2                | 4   | 7   |           |
| SL-69.1 |   | 2 x 2"          | B     | 166                   | 146 | 110 | 70 | 35 | 130x2                | 4   | 7   |           |
| ST-14.1 |  | 3 x 1/2"        | A     | 72                    | 65  | 61  | 34 | 17 | 54x2                 | 3,5 | 3,5 |           |
| ST-24.1 |   | 3 x 3/4"        | A     | 72                    | 65  | 61  | 34 | 17 | 54x2                 | 3,5 | 3,5 |           |
| ST-16.1 |   | 3 x 1/2"        | A     | 100                   | 89  | 67  | 34 | 17 | 80x2                 | 3,5 | 3,5 |           |
| ST-26.1 |   | 3 x 3/4"        | A     | 100                   | 89  | 67  | 34 | 17 | 80x2                 | 3,5 | 3,5 |           |
| ST-36.1 |   | 3 x 1"          | A     | 107                   | 89  | 75  | 42 | 21 | 80x2                 | 3,5 | 3,5 |           |
| ST-29.1 |   | 3 x 3/4"        | B     | 190                   | 146 | 105 | 60 | 30 | 130x2                | 4   | 7   |           |
| ST-39.1 |   | 3 x 1"          | B     | 190                   | 146 | 105 | 60 | 30 | 130x2                | 4   | 7   |           |
| ST-59.1 |   | 3 x 1 1/2"      | B     | 190                   | 146 | 105 | 60 | 30 | 130x2                | 4   | 7   |           |
| ST-69.1 |   | 3 x 2"          | B     | 190                   | 146 | 110 | 70 | 35 | 130x2                | 4   | 7   |           |
| SX-14.1 |  | 4 x 1/2"        | A     | 72                    | 65  | 61  | 34 | 17 | 54x2                 | 3,5 | 3,5 |           |
| SX-24.1 |   | 4 x 3/4"        | A     | 72                    | 65  | 61  | 34 | 17 | 54x2                 | 3,5 | 3,5 |           |
| SX-16.1 |   | 4 x 1/2"        | A     | 100                   | 89  | 67  | 34 | 17 | 80x2                 | 3,5 | 3,5 |           |
| SX-26.1 |   | 4 x 3/4"        | A     | 100                   | 89  | 67  | 34 | 17 | 80x2                 | 3,5 | 3,5 |           |
| SX-36.1 |   | 4 x 1"          | A     | 107                   | 89  | 75  | 42 | 21 | 80x2                 | 3,5 | 3,5 |           |
| SX-29.1 |   | 4 x 3/4"        | B     | 190                   | 146 | 105 | 60 | 30 | 130x2                | 4   | 7   |           |
| SX-39.1 |   | 4 x 1"          | B     | 190                   | 146 | 105 | 60 | 30 | 130x2                | 4   | 7   |           |
| SX-59.1 |   | 4 x 1 1/2"      | B     | 190                   | 146 | 105 | 60 | 30 | 130x2                | 4   | 7   |           |
| SX-69.1 |   | 4 x 2"          | B     | 190                   | 146 | 110 | 70 | 35 | 130x2                | 4   | 7   |           |

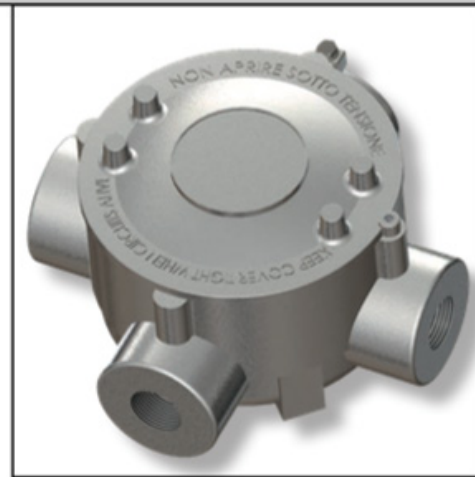
## DIMENSIONAL PLAN :



**MODEL A**

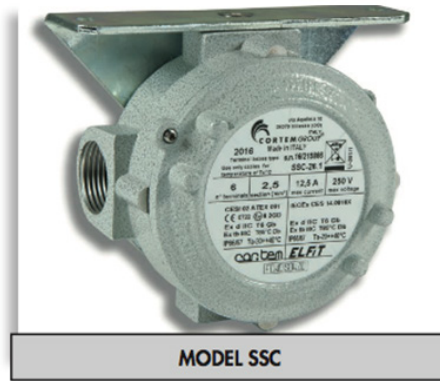
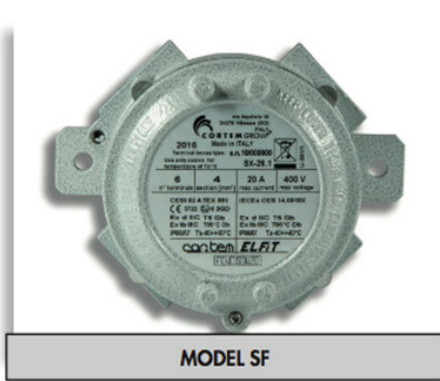


**MODEL B**


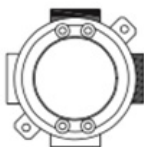


## DIMENSIONAL PLAN :

| Code  | MODEL | F GAS UNI ISO 7/1 | Outside dimensions mm |     |     |    | Inside dimensions mm |       |     | Weight kg |  |
|-------|-------|-------------------|-----------------------|-----|-----|----|----------------------|-------|-----|-----------|--|
|       |       |                   | A                     | D1  | H   | C  | B1                   | Ød1   | S   | S1        |  |
| SB-14 |       | 2 x 1/2"          | 90                    | 65  | 90  | 39 | 43                   | 54x2  | 3,5 | 3,5       |  |
| SB-24 |       | 2 x 3/4"          | 90                    | 65  | 90  | 39 | 43                   | 54x2  | 3,5 | 3,5       |  |
| SB-16 |       | 2 x 1/2"          | 110                   | 90  | 90  | 45 | 43                   | 80x2  | 3,5 | 5         |  |
| SB-26 |       | 2 x 3/4"          | 110                   | 90  | 90  | 45 | 43                   | 80x2  | 3,5 | 5         |  |
| SB-36 |       | 2 x 1"            | 114                   | 90  | 96  | 45 | 52                   | 80x2  | 3,5 | 5         |  |
| SB-49 |       | 2 x 1 1/4"        | 180                   | 150 | 114 | 60 | 59                   | 130x2 | 4   | 5         |  |
| SB-59 |       | 2 x 1 1/2"        | 180                   | 150 | 114 | 60 | 59                   | 130x2 | 4   | 5         |  |
| SB-69 |       | 2 x 2"            | 180                   | 150 | 114 | 74 | 71                   | 130x2 | 4   | 5         |  |



## SELECTION CHART OF SERIES SF... SSC... :

| Code     | Position of entries   | GAS UNI ISO 7/1   | Outside dimensions mm |     |     | Weight kg |
|----------|---|---|-----------------------|-----|-----|-----------|
|          |   |   | F                     | D1  | A   |           |
| SFC-14.1 |  | 2 x 1/2"  | 65                    | 75  | 90  |           |
| SFC-24.1 |   | 2 x 3/4"  | 65                    | 75  | 90  |           |
| SFC-16.1 |   | 2 x 1/2"  | 89                    | 110 | 130 |           |
| SFC-26.1 |   | 2 x 3/4"  | 89                    | 110 | 130 |           |
| SFC-36.1 |   | 2 x 1"  | 89                    | 110 | 130 |           |
| SFC-29.1 |   | 2 x 3/4"  | 146                   | 160 | 180 |           |
| SFC-39.1 |   | 2 x 1"  | 146                   | 160 | 180 |           |
| SFC-59.1 |   | 2 x 1 1/2"  | 146                   | 160 | 180 |           |
| SFC-69.1 |   | 2 x 2"  | 146                   | 160 | 180 |           |
| SFL-14.1 |   |  | 2 x 1/2"              | 65  | 75  | 90        |
| SFL-24.1 | 2 x 3/4"  |   | 65                    | 75  | 90  |           |
| SFL-16.1 | 2 x 1/2"  |   | 89                    | 110 | 130 |           |
| SFL-26.1 | 2 x 3/4"  |   | 89                    | 110 | 130 |           |
| SFL-36.1 | 2 x 1"  |   | 89                    | 110 | 130 |           |
| SFL-29.1 | 2 x 3/4"  |   | 146                   | 160 | 180 |           |
| SFL-39.1 | 2 x 1"  |   | 146                   | 160 | 180 |           |
| SFL-59.1 | 2 x 1 1/2"  |   | 146                   | 160 | 180 |           |
| SFL-69.1 | 2 x 2"  |   | 146                   | 160 | 180 |           |

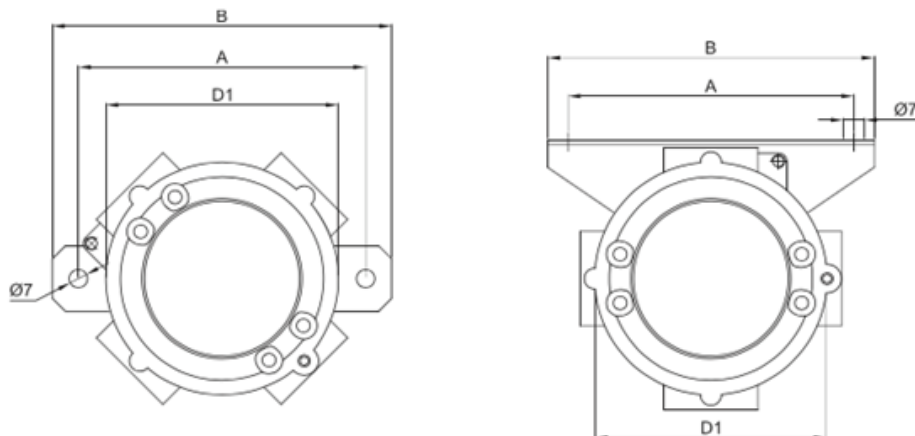
## APPLICATION SECTOR :





| Code     | Position of entries | GAS UNI ISO 7/1<br>F | Outside dimensions mm |     |     | Weight<br>kg |
|----------|---------------------|----------------------|-----------------------|-----|-----|--------------|
|          |                     |                      | D1                    | A   | B   |              |
| SFT-14.1 |                     | 3 x 1/2"             | 65                    | 75  | 90  |              |
| SFT-24.1 |                     | 3 x 3/4"             | 65                    | 75  | 90  |              |
| SFT-16.1 |                     | 3 x 1/2"             | 89                    | 110 | 130 |              |
| SFT-26.1 |                     | 3 x 3/4"             | 89                    | 110 | 130 |              |
| SFT-36.1 |                     | 3 x 1"               | 89                    | 110 | 130 |              |
| SFT-29.1 |                     | 3 x 3/4"             | 146                   | 160 | 180 |              |
| SFT-39.1 |                     | 3 x 1"               | 146                   | 160 | 180 |              |
| SFT-59.1 |                     | 3 x 1 1/2"           | 146                   | 160 | 180 |              |
| SFT-69.1 |                     | 3 x 2"               | 146                   | 160 | 180 |              |
| SFX-14.1 |                     | 4 x 1/2"             | 65                    | 75  | 90  |              |
| SFX-24.1 |                     | 4 x 3/4"             | 65                    | 75  | 90  |              |
| SFX-16.1 |                     | 4 x 1/2"             | 89                    | 110 | 130 |              |
| SFX-26.1 |                     | 4 x 3/4"             | 89                    | 110 | 130 |              |
| SFX-36.1 |                     | 4 x 1"               | 89                    | 110 | 130 |              |
| SFX-29.1 |                     | 4 x 3/4"             | 146                   | 160 | 180 |              |
| SFX-39.1 |                     | 4 x 1"               | 146                   | 160 | 180 |              |
| SFX-59.1 |                     | 4 x 1 1/2"           | 146                   | 160 | 180 |              |
| SFX-69.1 |                     | 4 x 2"               | 146                   | 160 | 180 |              |
| SSC-14.1 |                     | 3 x 1/2"             | 65                    | 65  | 80  |              |
| SSC-24.1 |                     | 3 x 3/4"             | 65                    | 65  | 80  |              |
| SSC-16.1 |                     | 3 x 1/2"             | 89                    | 110 | 125 |              |
| SSC-26.1 |                     | 3 x 3/4"             | 89                    | 110 | 125 |              |
| SSC-36.1 |                     | 3 x 1"               | 89                    | 110 | 125 |              |
| SSC-29.1 |                     | 3 x 3/4"             | 146                   | 130 | 150 |              |
| SSC-39.1 |                     | 3 x 1"               | 146                   | 130 | 150 |              |
| SSC-59.1 |                     | 3 x 1 1/2"           | 146                   | 130 | 150 |              |
| SSC-69.1 |                     | 3 x 2"               | 146                   | 130 | 150 |              |

## DIMENSIONAL PLAN :





## CERTIFICATION DATA FOR EMPTY BOXES :

**Classification:**

Group II

Category 2GD

**Installation:** EN 60079.14

zone 1 - zone 2 (Gas)

zone 21 - zone 22 (Dust)

**Marking:**

CE 0722  II 2 GD - Ex d IIC Gb - Ex tb IIIC Db - IP66/67

**Certification:**

ATEX CESI 03 ATEX 059U



IECEX IECEX CES 15.0012U

**Standards:**

CENELEC EN 60079-0: 2012, EN 60079-1: 2007, EN 60079-31, EN 60529: 1991 and EUROPEAN DIRECTIVE 2014/34/UE



**Ambient Temp.:**

 -40°C (-20°C) +160°C 

**Degree of protection:**

IP66/67

