

## ATEX CAMERA ENCLOSURES : SERIE XD DR 120 WIN

### CHARACTERISTICS :

In accordance with the current standard, trousers can be treated by Cortem or by partners with a production notice in accordance with the ATEX directive.

### CERTIFICATION :

ATEX FTZU 08 ATEX 0182U  
IECEX FTZU 09.0031U

### MARKING :

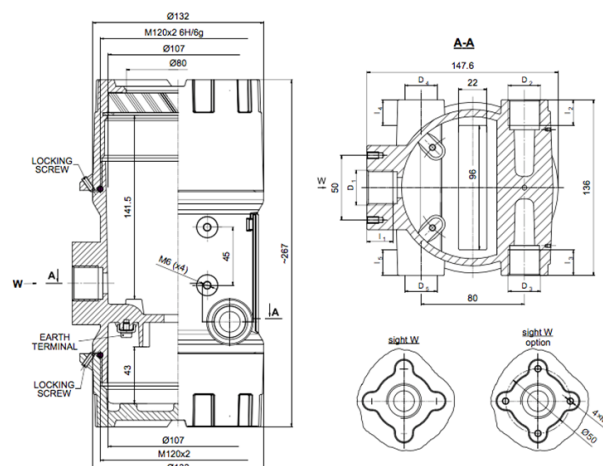
II2 GD Ex db IIC Gb – II2 D Ex tb IIIC Db

### APPLICATIONS :



- OIL AND GAS REFINERY
- PETROCHEMICAL CHEMISTRY
- ONSHORE PLANTS
- OFFSHORE PLANTS
- OIL AND GAS TRANSPORTATION
- FUEL DEPOT
- EXTREME TEMPERATURE



### DIMENSIONS :



## PROTECTION CONCEPT :

Type of protection ATEX Marking	Type of protection IECEx Marking	Permitted use	Approval Body	EC – type certificate No.	Protection Principle
1026  II2G Ex db IIC Gb	Ex db IIC Gb	Zone 1, Zone 2	FTZU	FTZU 08 ATEX 0182U	Contain the explosion and quench the flame
1026  II2D Ex tb IIIC Db	Ex tb IIIC Db	Zone 21, Zone 22	Czech Republic	IECEx FTZU 09.0031U	

## PROTECTION CONCEPT :

**Body and lid materials** : aluminum die casting

**Serving temperature** : T serv = -40 + 85 ° C - Silicone rubber VMQ

**Coating** : yellow chromate paint and chemical resistant paint (exterior only)

THREAD D <sub>3</sub> , D <sub>5</sub>	I <sub>3</sub> , I <sub>5</sub> [mm]	THREAD D <sub>2</sub> , D <sub>4</sub>	I <sub>2</sub> , I <sub>4</sub> [mm]	THREAD D <sub>1</sub>	I <sub>1</sub> [mm]	4 × M5	SEAL MATERIAL	COATING
M20×1.5 M24×1.5 M25×1.5	20	M20×1.5 M24×1.5 M25×1.5	20	M20×1.5 M24×1.5 M25×1.5 M27×2	20	option	4	SE
½ NPT mod ¾ NPT mod	19	½ NPT mod ¾ NPT mod	19	½ NPT mod ¾ NPT mod 1 NPT mod	19			Cal
PD		PD		PD				SPU

## ATTENTION :

The IP68 protection corresponds to a depth of 1.0 m immersed in water.

IP65 minimum protection is required for instruments designed for dusty areas.  
(In addition to zone 22, non-conductive dust for which a minimum protection IP54 is required)